



GARTON JONES

Moore House, 2 Gatliff Road  
London SW1W

GARTON JONES.COM





Moore House, 2 Gatliff Road  
London, SW1W

GARTON JONES.COM

8 Gatliff Road  
Grosvenor  
Waterside  
Chelsea  
London  
SW1W 8DP

Sales +44 (0) 20 7730 5007  
gws@gartonjones.com  
www.gartonjones.com

£425 Per Week

A STUDIO apartment for sale of approx. 279 sq.ft (25.9 sq.m) in Moore House, part of the popular Grosvenor Waterside development in Chelsea that surrounds the historic Grosvenor Dock. The apartment offers an open plan reception room, a fitted kitchen, a luxury bathroom suite and wood flooring with UNDERFLOOR HEATING. Residents have use of the 24 HOUR CONCIERGE, GYM & SPA. On-site Sainsbury's Local, coffee shop and private kids club. SLOANE SQUARE & VICTORIA Station with Gatwick Express are within walking distance. Battersea Park is also just a short stroll away across Chelsea Bridge.

- 279 Sq.ft (25.9 Sq.m)
- Studio Apartment
- Open Plan Living
- Modern Fitted Kitchen
- Luxury Bathroom Suite
- Underfloor Heating
- 24 Hour Concierge
- Residents Leisure Suite with Gym, Jacuzzi & Spa Facilities
- On-Site Sainsbury's, Creche, Coffee Shop & Purple Dragon Private Kids Club
- Walking Distance to Sloane Square & Victoria Station



Available via Garton Jones' on-site office at Grosvenor Waterside (underneath Bramah House).

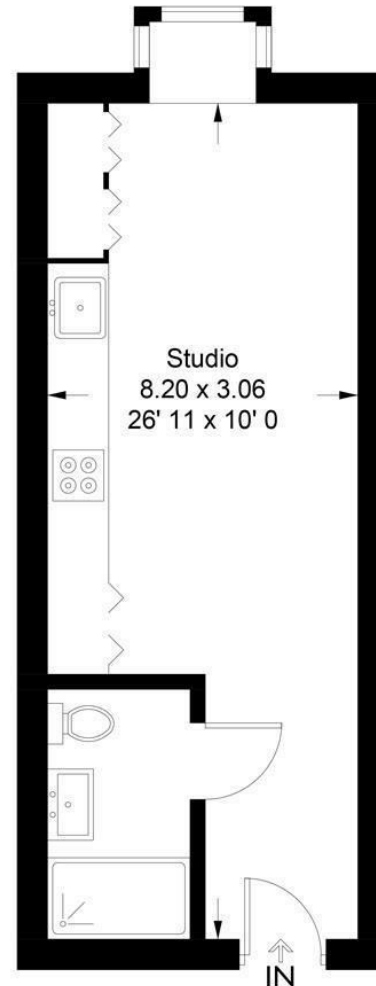
EPC Rating: C (79)

Council Tax: Westminster City Council (band D)

EPC certificate available on request.

**Moore House**

Approximate Gross Internal Area = 279 sq ft / 25.9 sq m



Not to scale, for guidance only and must not be relied upon as a statement of fact  
All measurements and areas are approximate only and have been prepared in  
accordance with the current edition of the RICS Code of Measuring Practice

